



50 Movers and Shakers in BioBusiness 2014

Thanks to our partners



Thanks to our sponsors



This report identifies 50 inspirational women in biobusiness in the UK who are challenging the status quo and bringing better health to people around the world. The report includes experienced leaders and rising stars.

As the global biobusiness sector undergoes rapid transformation, there are growing opportunities to tap into female talent and bring more success for men and women working together. This project follows on from the 2013 conference, Beating the Odds: growing biobusinesses today. Bio entrepreneurs, graduates and members of multinationals gathered at Clare College, University of Cambridge to hear from women at the top of the industry about responding to global healthcare challenges, building companies in new markets, the essentials of funding and creating effective teams and boards.

Increasing the visibility of inspirational women in companies, research, hospitals, finance and advisory roles with their visions and boldness brings fresh thinking and opportunities for bio entrepreneurs. Research suggests that women adopt different strategies for business growth from novel ways of building companies and working in teams to raising funds and attitudes to risk. 50 Movers and Shakers is by no means a definitive list, instead it draws attention to the considerable, often low-key, dynamism of these women and their creative paths to bring better health to humankind.

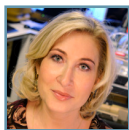
Dr Andy Richards, Serial Biotechnology Entrepreneur and Business Angel, Dr Richard Seabrook, The Wellcome Trust, and Professor Heather Wallace, University of Aberdeen reviewed the report and I give many thanks for their suggestions, encouragement and wisdom.

I am immensely grateful for the support and collaboration of many people in compiling this report and I hope you find it useful.

Miranda Weston-Smith
October 2014



This symbol represents the ladies in our industry who are under 40 and making significant strides and pushing boundaries.



SABINE BAHN
**Professor of Neurotechnology and Director,
 Cambridge Centre for Neuropsychiatric
 Research, University of Cambridge**

Sabine's research focuses on understanding the biological basis of severe psychiatric disorders such as schizophrenia and bipolar disorder. Blood biomarkers that aid in early diagnosis and predict drug response could reduce misdiagnosis and reduce the risk of non-response, which in turn will reduce the time to recovery and improve disease outcome. In 2005, she co-founded Psynova Neurotech to commercialise the biomarker tests.

Sabine is a Consultant Psychiatrist and neurobiologist.



JULIE BARNES
CEO, Abcodia

Julie was part of the founding team of Abcodia, leading the vision to become a globally successful business in cancer detection and screening, delivering products that make a difference to individuals and healthcare systems around the world and saving lives. The first product is an early stage ovarian cancer diagnostic.

After 15 years in industry, Julie joined the world of biotech in Cambridge. For the next 10 years, she experienced the challenges of building a business from the ground up. The motivation for joining Abcodia came from the loss of Julie's mother to colorectal cancer at the young age of 43.



KATE BINGHAM
Managing Partner, SV Life Sciences

Kate is one of the pre-eminent life science venture capitalists in the UK. She has current or past directorships of numerous emerging companies in the UK, US, Ireland, Sweden and Germany. It's the science behind a business, how to make things work with limited data, and shaping the future that excites her. Finding cures for diseases that are not currently well treated is one of her key goals: everything from cancer to deafness.

Before joining SVLS in 1991, Kate worked as a Strategy Consultant at Monitor Company and in business development in the early days of Vertex Pharmaceuticals. Kate has current or past roles on numerous advisory boards including BVCA, BIA, Wellcome Trust Strategic Translation Committee and Imperial College Business School.



NICOLA BAKER-MUNTON
Founder and CEO, Stratagem IPM

Nicola founded Stratagem in 1999 recognising the need for specialist commercially driven intellectual property advice in the development of life science technologies from inception through development to market; from academia through start-up to stock market listing. The success of this holistic approach has led to expansion of the business to 10 attorneys.

Nicola is a Chartered UK Patent Attorney and European Patent Attorney and accredited mediator. Earlier she worked for nine years as an industrial practitioner at the Wellcome Foundation, and four years in the private sector.



MAINA BHAMAN
**Director Healthcare Ventures, Imperial
 Innovations plc**

Maina has led a number of investments in Imperial Innovations' healthcare portfolio including into PsiOxus Therapeutics and Cell Medica. Maina serves on the board of Autifony Therapeutics, Cell Medica, Ixico, PsiOxus Therapeutics and Topivert Pharma. She is a proponent of 'invest in excellent people and world-class disruptive technology will follow. Be open too about expectations and tough decisions.'

Maina joined Innovations in 2006 and prior to that worked in the research and development team at Celltech. Maina's experience includes Chimeric Therapies, a cell therapy start-up and GeneMedicine, a gene therapy company.



CAROLINE BRIGGS
**Founder and Managing Director, Amici
 Procurement Solutions**

Caroline founded Amici Procurement in 2005 to transform biotech procurement and operational processes. Amici delivers smart processes, cutting edge cloud based software in addition to savings on price and time. The company now employs 17 people.

In setting up Amici Caroline has experienced most of the highs and lows of starting a company from scratch. She firmly believes there is a solution out there to every challenge, and in finding those solutions you build a bigger and stronger future. Before founding Amici, she worked for Zeneca Life Science Molecules, GSK, and Invitrogen.



ANN CONNOLLY
Senior Director New Ventures,
Johnson + Johnson Innovation

Ann's role involves seeking the best science and technology to deliver next generation therapies and putting the right framework in place to transform those innovations into products. She believes that you have to be passionate to succeed in this role; there's no place for pedestrianism!

Ann has extensive experience in the pharmaceutical industry having worked in various drug development roles and in business development at GSK. Ann joined J+J from UCB Pharma where she led the licensing activities for the new medicines portfolio in CNS and Immunology.



MARY ANNE CORDEIRO
Non-Executive Director, Albion Technology &
General VCT plc and private investor

Mary Anne was instrumental in closing the agreement with Albion VCT where part of the £45 million raised was earmarked for medical technology businesses from Brunel University, St George's Hospital and University College London. She is passionate about thinking outside the box as an investor and in product development.

Since 1998, she has been working on the commercialisation of innovation and has helped develop strategies to bring new products and services to market as well as to finance growth. Mary Anne's earlier career with Goldman Sachs, Bankers Trust and Paribas gave her expertise in corporate finance and access to a network of investors.



LILY CORTESE
Director, Business Operations & Project
Management, Johnson + Johnson Innovation

Lily is part of a team of scientific and functional experts who work to catalyze early innovations and discover opportunities for collaboration and investment across Johnson + Johnson's global healthcare businesses through executing bespoke deal structures.

To Lily, sourcing transformative innovation to meet unmet medical needs is about ensuring success through conviction and personal accountability; 'People don't care how much you know until they know how much you care!' She works with her colleagues to foster entrepreneurial ecosystems through open relationships with academia, biotech and industry partners.



MARGARET ANNE CRAIG
Founder and CEO, Clyde Biosciences

Margaret Anne founded Clyde Biosciences to provide earlier and more accurate preclinical diagnosis of the toxic effects of new drugs, not just cardiac medicines, on the heart. Through optical measurements of the electrical changes that take place in heart cells, derived from stem cells, as they beat they can pick up changes that might otherwise not be detected until much later and so also reduce testing on animals.

Margaret won the 2012 Royal Academy of Engineering ERA Foundation Entrepreneurs Award. She adds, 'Now I have a major job to do in that I am setting out to build a world-leading bioscience company.'



JANE DANCER
CBO, F-star

As Chief Business Officer, Jane leads business development and the related functions supporting the company's development of novel bispecific antibodies. She is a pragmatic optimist with a strong sense to put words into action.

Prior to joining F-star, Jane was VP Business Development at Cellzome and Director, Business Development at MedImmune (formerly Cambridge Antibody Technology). Jane spent the first part of her career in the agrochemical industry where she held research and project management roles in Aventis Crop Science, AgrEvo UK and Schering Agrochemicals.



PROFESSOR DAME KAY DAVIES CBE FRS
Director of MRC Functional Genomics Unit,
University of Oxford and Deputy Chair,
Wellcome Trust

Dame Kay's research is on the genetic basis of muscle disease, movement, and behavioural disorders. Her work, with collaborators, on Duchenne Muscular Dystrophy (DMD), has led to the possibility of up-regulating the protein utrophin to treat DMD. In partnership with Summit plc, a small molecule utrophin up-regulator has entered Phase 1b clinical trials. 'Focus on the biological problem and recognise that commercial activities need different skills. Be relaxed about control!' says Dame Kay.

Dame Kay founded the MRC Functional Genomics Unit in 1999, co-founded the biotechnology company Summit plc, and is a founding Fellow of the Academy of Medical Sciences. She has an active interest in the ethical implications of her research and public understanding of science.



PROFESSOR DAME SALLY DAVIES FRS
Chief Medical Officer for UK

Dame Sally is the UK Government's principal medical adviser. She also leads the National Institute for Health Research with its £1 billion health research budget. Dame Sally advises on research strategy around the world including being a member of the International Advisory Committee for A* STAR, Singapore. She has called for global action to tackle the catastrophic threat of widespread antibiotic resistance.

Dame Sally is a member of the World Health Organisation (WHO) Executive Board. In September 2011 Dame Sally was conferred as Emeritus Professor at Imperial College London and was elected a Fellow of the Royal Society on 1 May 2014.



HEATHER FAIRHEAD
CEO, Phico Therapeutics

A pioneer, Heather founded Phico Therapeutics in 2000 to develop a new class of antibiotic. Heather has raised £14.5 million to date from a mix of 140+ shareholders, the Wellcome Trust and a TSB grant, which is funding a development pipeline of three products focussed on treating multi-drug resistant bacteria.

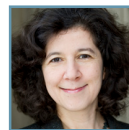
Prior to starting her scientific career, Heather gained several years' experience working in marketing/sales in a variety of industries. Heather is a regular lecturer at the University of Cambridge and Imperial College.



HARRIET FEAR
CEO, One Nucleus and British Business Ambassador

Harriet joined One Nucleus in 2009, and transformed the regional biotech initiative into the largest not-for-profit membership organisation for international life science and healthcare companies in Europe. In January 2014 the Prime Minister appointed Harriet a British Business Ambassador to promote the UK life science and healthcare sector.

Earlier Harriet served as a Diplomat with the British Foreign Office for 21 years, working in over 17 countries around the globe, including as Deputy Ambassador three times, hostage observer in Cambodia and she led an evacuation of Brits out of the Congo. Half her diplomatic career was spent working on commercial matters, primarily with SMEs.



BARBARA DOMAYNE-HAYMAN
Chief Business Officer at Autifony Therapeutics and Entrepreneur-in-Residence at the Stevenage Bioscience Catalyst (SBC)

Barbara has a broad range of commercial, fund-raising and general management experience and especially understands how to bring about the alignment of opportunities and companies with their funders and customers. At SBC, she mentors early stage companies and works on strategic collaborations.

Prior to her current roles, Barbara was CEO of Stabilitech, a platform technology company stabilising vaccines, and earlier she was Commercial Director at Arrow Therapeutics, until AstraZeneca acquired the company. She previously worked in business development in Celltech and held senior commercial positions at Zeneca.



JULIA FAN LI
Director, Global Health Investment Fund

Julia helped launch the pioneering \$108 million fund in 2013 that focuses on accelerating biomedical innovation in vaccines, drugs, diagnostics and devices for diseases which disproportionately affect poor countries. The fund is managed by Lion's Head Global Partners, based in London and Nairobi.

Julia works at the intersection of science and business in healthcare innovation and specializes in innovative finance for global health. She is co-founder of the African Innovation Prize and serves as a policy advisor to the UK All-Party Parliamentary Group on Global Health. She has a background in finance and immunology.



SUE FODEN
Portfolio Non-Executive Director

Sue is Chair of BerGenBio AS and Cizzle Biotech, non executive director of Vectura plc, Source Bioscience plc, Evgen, Oxford Ancestors and the Rainbow Seed Fund. Engaging with scientists, teasing out commercialisation opportunities, and bridging the cultures of academic research, finance and pharma/biotech is central to her career.

A background in science, technology transfer and venture capital, Sue was founder CEO of CRT. There and later at Merlin Biosciences, she was instrumental in the formation of Cyclacel, Kudos Pharmaceuticals and Piramed. She has worked with cancer researchers, the Wellcome Trust, and with the MRC in the early days of antibody commercialisation.



ROWAN GARDNER
Co-Founder and Chair, Biolauncher,
Co-Founder, RowAnalytics

Rowan co-founded Biolauncher to advise biotechnology and medical device businesses wanting to grow and attract capital. Most recently she co-founded RowAnalytics to bring powerful predictive analytics to big healthcare data to enable better quality healthcare, reduce costs and improve patient outcomes and help us live healthier lives.

Rowan chairs the Astia life science advisory board in Europe and is a member of the global life science cabinet. She has worked with over 20 university startups, international companies and the NHS to find mechanisms to create value and investment and co-founded Synomics with scientists from CERN.



DEBORAH HARLAND
Partner, SR One

Deborah joined SR One in 2005 to establish the firm's European investment office. She has been instrumental in positioning SR One as a premier venture capital investor in Europe, leading investments in and holding directorships of many innovative early stage companies including Syntaxin, Mission Therapeutics, Bicycle Therapeutics and F-star. Working with creative, courageous, highly motivated people to translate breakthrough science into products to transform the future of healthcare is what energizes her.

Deborah has extensive operational, drug development and licensing experience through roles in clinical development, medical affairs and business development over 20 years.



KAREN HODGKIN
Senior Vice President, Clinical Operations,
Cell Medica

Karen joined Cell Medica in 2008 and heads the clinical and regulatory functions for the company, which develops T cell immunotherapies to treat infections and cancers. She has run multicentre randomised trials, working with specialist clinicians and global regulatory authorities in an emerging and exciting therapeutic area. The company is about to embark on an innovative oncology trial being set-up in 24 centres across five countries, which offers many new logistic challenges!

Karen has worked in clinical research since 1983, firstly with Boehringer Ingelheim, then ICN Pharmaceuticals, British Biotech and for 12 years as a clinical consultant in the US.



PROFESSOR JUDITH HALL OBE
Head of Department, Anaesthetics, Intensive
Care and Pain Medicine, Cardiff University

Judith founded The Bill Mapleson Centre, in partnership with Flexicare, and it opened in 2014. It has an engineering laboratory for equipment testing, design and development with industry and a clinical simulation centre, to both train tomorrow's clinicians and provide courses for business. She invented the Hall-Lock system to prevent medical equipment misconnection and has an extensive medical device innovation portfolio.

Judith, who began her career with two arts degrees, trained as a surgeon and subsequently became a Consultant Anaesthetist. In 2004, she founded the charity, Mothers of Africa, to reduce death in childbirth.



THEODORA HAROLD
CFO, PsiOxus Therapeutics

Theo oversaw a funding round of £22 million for PsiOxus to take a new anti-cancer platform from the laboratory to clinical proof of concept. Theo manages the finances where cash flow demands have to be aligned to a market where regulation, competition and patient populations are constantly changing. 'For an emerging technology to reach its full potential, you need a strong vision and high level of discipline and courage'.

Previously, Theo held FD/senior roles with Mission Therapeutics, Cytomyx Holdings plc, OrthoMimetics, Hybrid Biosystems and Cytocell. She studied Classics at the University of Cambridge, and then trained as a chartered accountant with PwC.



JACKIE HUNTER CBE
CEO, Biotechnology and Biological Sciences
Research Council (BBSRC)

Jackie joined BBSRC as CEO in 2013 and is passionate about innovative collaborations and partnerships engaging academia and industry. She founded OI Pharma Partners in 2010 to support the life science sector harnessing the power of open innovation.

Earlier Jackie led neurology and gastrointestinal drug discovery and development and GSK's external science engagement strategy. She has played significant roles in the implementation and governance of major international industrial and public-private partnerships. She is a member of the Governing Council of the University of Hertfordshire.



ANNE HYLAND
CFO, BBI Diagnostics Group

Anne is steering the company to growth through integrated responsibility for both the financial side and innovation and R&D, forging close relationships between customers and technology providers, especially in molecular diagnostics. 'I'm now closer to development than in a conventional development company', Anne comments.

Anne is also Chair of the Audit Committee of the FTSE 250 speciality chemicals company, Elementis plc. Earlier she was CFO at Vectura Group plc, a specialist in respiratory diseases, and has held senior roles at Celltech Group plc, Medeva plc and KPMG.



HELEN LEE
Director of Research, Department of Haematology, University of Cambridge and Founder of Diagnostics for the Real World

Helen joined the University of Cambridge in 1996 to focus on the development of technology and diagnostic assays for infectious diseases in resource-poor settings. To commercialise the technologies, she founded Diagnostics for the Real World in 2002. It is her fourth start up.

She began her career at the Centre National de Transfusion Sanguine where she was responsible for developing monoclonal blood typing reagents. She then joined Abbott Laboratories, holding senior positions. She has received numerous awards.



SUSAN LOWTHER
CFO, Ixico plc

Susan views the role of Chief Financial Officer as the business glue that combines fund raising and sound financial management with corporate development thinking. She was appointed Chief Financial Officer at Ixico in October 2014. Prior to her recent appointment, she was CFO of Lab21, in which she raised equity and debt financing and executed five corporate transactions. Lab21 was acquired by Novacyt in June 2014 valuing the enlarged group at circa €40 million.

Susan has worked in the pharma and biotech sector for over 20 years and raised equity investment in the public markets via an IPO and in private companies.



ALLISON JEYNES-ELLIS
CEO, Avillion LLP

Allison became CEO in 2014 and leads the company as it advances its first innovative collaborative development agreement with Pfizer to conduct a global phase III clinical trial evaluating Bosulif (bosutinib) as a first-line treatment in chronic myelogenous leukaemia. Avillion incurs 100% of the clinical and regulatory risk, while advancing the development of late stage assets more rapidly than multinationals.

Allison has over twenty years industry experience as an oncology specialist. She has significant drug development experience including successful EU and US drug approvals and global clinical programme management, and Health Technology Appraisals across Europe. She is a Director for the Health Research Authority and BioCity Scotland.



MELANIE LEE CBE
CEO, NighstaRx, Founder and Director, Think10

Melanie was appointed CEO of NightstaRx in 2014, a biopharmaceutical company focused on the development and commercialisation of therapies for retinal dystrophies, with founding investors Syncona and Isis Innovation. She founded the pharmaceutical consultancy Think10 to help creative people deliver the unimaginable in teams.

Melanie previously served as CEO of Syntaxin. She has held senior roles at UCB, Celltech, and GSK. Melanie was Chair of Cancer Research Technology 2003-2011. She is a Non Executive Director of BTG plc and H. Lundbeck A/S.



DAME LOUISE MAKIN
CEO, BTG plc

Dame Louise joined BTG as CEO in 2004 and has transformed it from a technology commercialisation business to a fast-growing healthcare company that develops innovative products in specialist areas of medicine with high unmet needs, including liver cancer, vascular disorders and exposure to certain toxins.

Earlier, Dame Louise held a variety of roles at ICI before becoming Director of Global Ceramics at English China Clay. Dame Louise then joined Baxter Healthcare as Vice President, Strategy & Business Development Europe and was then President, Biopharmaceuticals Europe of Baxter Healthcare. Dame Louise is also a non-executive director of Intertek Group plc and a Trustee of the Outward Bound Trust.



FIONA MARSHALL
Founder and CSO, Heptares Therapeutics

Fiona founded Heptares in 2007 as an industry pioneer in structure-based drug design to build molecules that target challenging G protein coupled receptors. The company employs over 70 staff, has raised over \$60 million, has multiple partnerships and is developing medicines for Alzheimer's, schizophrenia, ADHD and severe migraine.

Fiona has more than 25 years experience in drug discovery, including senior positions at GSK and Millenium, as well as consulting for venture capital and emerging biotech companies. She is currently Vice-chair of the Wellcome Trust Seeding Drug Discovery Committee and on the Board of Trustees for Alzheimer's Research UK.



PROFESSOR HELEN MCSHANE
Nuffield Department of Medicine, University of Oxford

Helen is the first person in 80 years to take a TB vaccine candidate into a phase 2b efficacy study: many said it could not be done. Her group has developed a new TB vaccine, MVA85A, designed to enhance the protective immunity conferred by BCG, and the vaccine is now in trials with South African children and HIV-infected adults. She is also working on models of immune responses to mycobacteria, mucosal immunity and vaccine delivery.

Previously Helen was an Infectious Diseases physician with a special interest in HIV medicine. She continues to see patients in a weekly HIV clinic.



DEBORAH O'NEIL
Founder, CEO and CSO, NovaBiotics

Deborah founded NovaBiotics in 2004 to develop novel antimicrobial peptide therapies for clinically and economically challenging infectious diseases. The resulting product pipeline now includes two clinical-stage compounds: a treatment for nail infections and a cystic fibrosis therapy. Deborah has raised over £12 million to finance the business and led NovaBiotics' transformational licensing deal with Taro in 2013.

She has over 15 years' experience in the discovery, development and commercialisation of novel anti-infectives for clinically unmet diseases. Deborah is a Board member of the Scottish Life Sciences Association and a member of the Life Sciences Advisory Board for Scotland.



RUTH MCKERNAN CBE
Senior Vice-President, Pfizer, CSO, Pfizer Neusentis

Ruth is a champion of 'open innovation' to increase the flow of knowledge and opportunities for early stage discussions and leads the research unit that works on drug discovery to alleviate pain and sensory disorders. The team works in partnership with academic and corporate researchers in Cambridge and around the globe.

Ruth sits on the Scientific Advisory Board for the British Neuroscience Association, the Advisory Board of the Cambridge Stem Cell Centre and the Canadian Centre for the Commercialisation of Regenerative Medicine. She is a member of the Medical Research Council, a member of the Innovation Board at ABPI, a Trustee of the International Spinal Research Trust and a visiting Professor at King's College, London.



CARINA NAMIH
CEO and Co-Founder, HelixNano

HelixNano is a breakthrough company, leveraging recent advances in DNA sequencing and machine learning to develop 'The Molecular Recorder'. This technology collects data inside cells and writes the information on a synthetic DNA tape. Application areas include drug discovery, personalized medicine and synthetic biology. The company is backed by top venture capital investors, a major pharmaceutical company and is collaborating with leading academic institutions.

Carina has prior experience successfully building a venture-backed technology company in San Francisco. She was previously a top ranked analyst at Goldman Sachs in London.



FIONA NIELSEN
Founder and CEO, DNAdigest

Fiona founded DNAdigest in 2013 to promote and enable open access to knowledge for the advancement of genomics research. DNAdigest organises workshops, hackathons, events and activities to increase engagement and promote efficient mechanisms for genetics data sharing. The DNAdigest charity and its spinoff social enterprise Nucleobase Ltd has raised funds through crowd funding, private equity investment and grants. Fiona is also a consultant to Genomics England.

Fiona's background is in bio-informatics, genetics research, startups, web development, photography and teaching and she speaks five languages.



JANE OSBOURN
VP Research and Development, MedImmune,
Cambridge

Jane is responsible for leading the company's work to build a portfolio of biosuperior antibody therapies and is closely involved with AstraZeneca's (MedImmune's parent company) innovative plans to locate its global headquarters in Cambridge, UK.

Jane joined MedImmune, formerly Cambridge Antibody Technology (CAT), in September 1993. She originated several key publications and patents, and made a significant contribution to the discovery and development of marketed drugs (Humira and Benlysta) and more than 40 clinical candidates. Jane is a member of the UK Medical Research Council Industry Grant Award Assessment Panel and a member of the Board of the BioIndustry Association.



CATHRIN PETTY
Co-Head EMEA Healthcare Investment
Banking, JP Morgan

Cathrin has extensive senior-level experience in the life sciences industry and has invested in over 28 companies in the EU, US and India in the pharmaceutical, biotechnology, medical technology and generics sectors. She is also a Non-Executive Director of Circassia Pharmaceuticals plc and William Vantage.

Earlier, Cathrin was a Special Partner at Vitruvian Partners LLP, a Partner at Apax Partners LLP and a Non-Executive Director of the NHS Strategic Health Authority for Greater London.



CARMEL REILLY
CEO and Co-Founder, NeurocentRx Pharma

Neurocentrx was formed in 2013 with a mission to alleviate chronic and severe cancer pain. Neurocentrx's business model is about putting patients first, designing straightforward products, reformulating existing products and agents where useful, collaborating with clinical professionals, and harnessing the power of digital and social media to communicate their approach. Carmel closed its first investment round in spring 2014 with Equity Gap Limited and the Scottish Enterprise Co-investment fund.

Previously, Carmel worked with an entrepreneur and translational team at Edinburgh Bioquarter, building life science companies from academic science and clinical research.



CALLY PALMER CBE
CEO, Royal Marsden NHS Foundation Trust

Cally says 'The best developments at the Royal Marsden are those where we have had the freedom to work with our local communities to make a difference. This ranges from developing the latest drug for advanced prostate cancer for patients worldwide to trialling real time feedback from patients on their personal experience of care'.

Prior to joining the Royal Marsden in 1998, she was Deputy Chief Executive at The Royal Free Hampstead NHS Trust. She is a Trustee of The Royal Marsden Cancer Charity, a member of the Institute of Health Services Management and the Board of the Institute of Cancer Research. She was awarded a CBE in 2006 for her contribution to the NHS.



DENISE POLLARD-KNIGHT
Managing Partner, Phase4 Partners

Denise is a well-known venture capitalist whose approach has often been described as a 'velvet hammer' when in difficult negotiations. She loves the challenge of breaking through ceilings having been one of less than a handful of female Managing Directors in a Japanese Investment Bank, a board director of several public US biotech companies and now Managing Partner for Phase4 Partners. She enjoys the thrill of backing great entrepreneurs to develop new treatments for a wide range of diseases.

Denise has been a Trustee of the British Heart Foundation following both her mother and grandfather passing away from heart problems when they were relatively young.



RUTH ROBERTS
Global Head of Regulatory Safety,
AstraZeneca

Ruth works at the interface of industry and academia to drive innovation in drug discovery, design and development. She recently published a series of papers challenging existing thinking in regulatory strategies to reduce animal usage and to reduce safety-related attrition in drug development, refining our approach to human risk assessment and translation.

Ruth has over 20 years experience as a cellular and molecular toxicologist working with ICI/Zeneca, Aventis in France and more recently overseeing non-clinical toxicology input for the AstraZeneca small molecule portfolio. She is President of EUROTOX.



ELIZABETH ROPER
Partner, Epidarex Capital

Elizabeth, with colleagues, closed the new £47.5 million life science and health tech fund in 2014 to invest in early stage life science and health technology companies, including spinouts from the Universities of Edinburgh, Glasgow, Aberdeen and King's College, London. Investors include the four universities and Eli Lilly & Company. Epidarex's goal is to deploy scalable capital and resources to allow the successful commercialisation of the UK's most innovative research. Elizabeth serves on the board of Edinburgh Molecular Imaging.

Elizabeth joined Epidarex in 2013, having previously worked at Chroma Therapeutics, and in venture investing at the Wellcome Trust investment division, and Atlas Ventures.



NICOLE SORANZO
Group Leader, Wellcome Trust Sanger Institute

Nicole's research is on the genetic analysis of phenotypic and genetic datasets in healthy human populations. She recently linked 145 genetic regions with over 400 molecules measured in blood and, with collaborators, found 90 new genetic associations. The compendium can be used as a tool to identify genes for drugs and to understand metabolic disorders. The results of her research are made freely available to the scientific community.

Nicole initially studied plant population and evolutionary genetics at the Universities of Milan and Dundee and subsequently worked in the US and UK on human population and statistical genetics.



LIISA VAN VLIET
Founder and CEO, Floceleris

Liisa founded Floceleris to provide early diagnosis of Alzheimer's disease by measuring the activity of the aggregation process that forms plaques in the brain. The diagnostic platform has the potential to enable the development of new treatments through early diagnosis, as well as measure the activity and spread of neurodegeneration. Floceleris won the 2013 Carpe Diem Trust Life Science Start-up Company of the year award.

In 2010, Liisa and her colleagues founded Drop-Tech, which is developing new technologies for the generation of microfluidic droplets. The company has partnered with Dolomite Microfluidics to sell the Mitos Dropix and a series of add-on products.



SUSAN SEARLE
Portfolio Non-Executive Director

Susan is building a portfolio of non-executive directorships across private and public companies in healthcare and technology. In 2014, Horizon Discovery plc appointed her a Non-Executive Director to help guide the company through its next stage of growth. She is also a Non-Executive Director of Benchmark Holdings plc, an agricultural biotechnology company and was involved in their IPO, and of QinetiQ plc.

She co-founded Imperial Innovations Group plc, leading as CEO from 2002 to 2013. During this time the company invested over £120m, which included several bioscience companies: Abingdon Health, Circassia, Cell Medica, PsiOxus, Respivert and Thiakis. Susan sits on the Advisory Board for the Technology Strategy Board's Emerging Technologies Group, and is a Trustee of Fight for Sight.



PROFESSOR DAME JANET THORNTON CBE FRS
Professor and Director, European Bioinformatics Institute

Dame Janet is one of the world's leading researchers in structural bioinformatics. The goal of her group's research is to understand more about proteins, their structure and evolution. She has played a key role in ELIXIR, the pan-European infrastructure for biological data, since its inception in 2001. She comments 'my approach to research is to work collaboratively to get the best from everyone and to reach an optimal outcome'.

Dame Janet studied physics before turning to biophysics. She is an Associate of the US National Academy of Sciences.



ELAINE WARBURTON OBE
CEO and Co-Founder, QuantuMDx Group

Observing the inequality of healthcare across the globe and even in the UK, Elaine decided to help develop a solution to detecting and treating disease early and cheaply. QuantuMDx Group is pioneering Q-POC™, an 'Apple-esque' handheld laboratory with in-built DNA sequencing capable of detecting disease in minutes for a few pounds. The first tests, starting in 2015, will be for drug resistance testing for malaria and multi drug resistant-TB, a warfarin test and a 20-minute cancer profiler.

Elaine is an entrepreneur but also a former nurse, geneticist and chartered accountant who used to run hospitals and received an OBE in the 2014 Queen's New Year Honours.



LOUISE WOOD

**Deputy Director/Head of Research
Infrastructure and Growth, Department of
Health**

Louise joined the Department of Health in 2005 to lead on R&D relations with industry. She is a passionate advocate and facilitator of cross-sector research collaboration and is involved in all major Government/industry/NHS initiatives established to improve research partnerships between the NHS, universities and the life sciences industry.

Trained as a physiologist, she spent her early career at the Medicines and Healthcare Products Regulatory Agency working in pharmacovigilance, corporate planning and as Board member responsible for the General Practice Research Database. She is an Honorary Fellow of the Faculty of Pharmaceutical Medicine.



JING ZHANG

**Co-Founder and Director of Operations,
Aqdot**

Jing co-invented the core technology for Aqdot, in collaboration with Roger Coulston, during her PhD. The technology produces tiny droplets to encapsulate chemicals, for example enzymes, and allows controlled release in the millimetre and nanometre range with applications in home care, personal care, nutraceuticals and agrochemicals. The company raised £1 million in 2013.

Earlier Jing studied at the Australian National University and led Cambridge University Entrepreneurs, the 2000 member not-for-profit organisation.

Looking ahead...

The plan is to run this annual campaign to find 50 Movers and Shakers for five years with the aim to bring more success in biobusiness.

If you would like to make a nomination, please email Miranda@mws-consulting.co.uk

Acknowledgements

Many thanks to the advisors, nominators and supporters who have made this report possible. They include: Ajoeb Baridi, Martyna Popis, Agnieszka Wabik, Karolina Zapadka, Innovation Forum; Julie Barnes, Abcodia; Tarquin Bennett-Coles, Odgers Berndtson; Maina Bhaman, Imperial Innovations plc; Lily Cortese, Johnson + Johnson Innovation; Fran Crawford, Altacor; Professor Dame Kay Davies, University of Oxford; Darrin Disley, Horizon Discovery plc; Paul Edwards and Matt Wheeler, Horton Ruston Poole; Elaine Evans, Technology Strategy Board; Patrick Farrant, Taylor Vinters; Ann Fisher and Claire Button, Bailey Fisher; Diana Garnham and Oliver O'Hanlon, Science Council; Melanie Goward, Finance Wales Investments; Deborah Harland, SR One; Rachel Holdsworth, Holdsworth Associates; Orsolya Ihasz, University of Cambridge Judge Business School's Centre for Entrepreneurial Learning; Claire Lachlan, UKTi; Wouter Meuleman, Illumina; Patricia Pryce, Cranfield International Centre for Women Leaders; Stella Wooder, Pope Woodhead Associates.



50 Movers and Shakers in BioBusiness 2014



@BioBeatUK